

JD7 Investigator Light



Benefits

- Fully portable
- Tri sensor head (CCTV, hydrophone and sonde)
- Pressurized insertion upto 16bar
- Extremely robust camera head with bend mechanism
- Interchangeable hi-resolution CCTV and hydrophone system
- On-board hydrophone for precise leak detection
- Sonde for above ground location
- Real-time analysis software

Description

The JD7 Investigator Light™ is a fully integral pressurized pipe inspection and leak detection system designed for harsh environments. Designed for 3in. diameter pipework and above for complete asset condition examination and leak finding. Access through fire hydrants*, 1.5in. and above pressure fittings, air valves, gate valves and Quadrina's at full mains pressure. The key to the technology is the ability to inspect the condition of pressurized potable water pipes without the need to isolate supplies or services. The sensors head incorporates a camera system as well as a hydrophone for leakage detection and a 512Hz sonde for pin pointing and line location.

The robust design is all housed within a peli-case which includes the cable, mini laptop, switches, drive mechanism and battery making the system fully portable and durable.

Assessment and leak detection in all materials is viable with the JD7 Investigator Light™. The software is specific for the Investigator technology and is used to control the sensor head and view both video and hydrophone results from live surveys. The software displays video in a re-sizable window and also acoustic results in order of amplitude and frequency. The software also operates the sonde which is built into the camera sensor head.

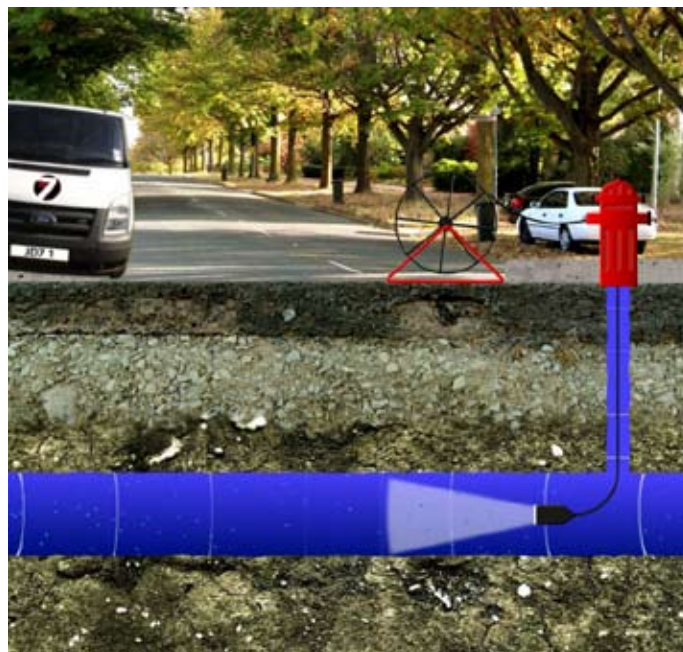


20
13

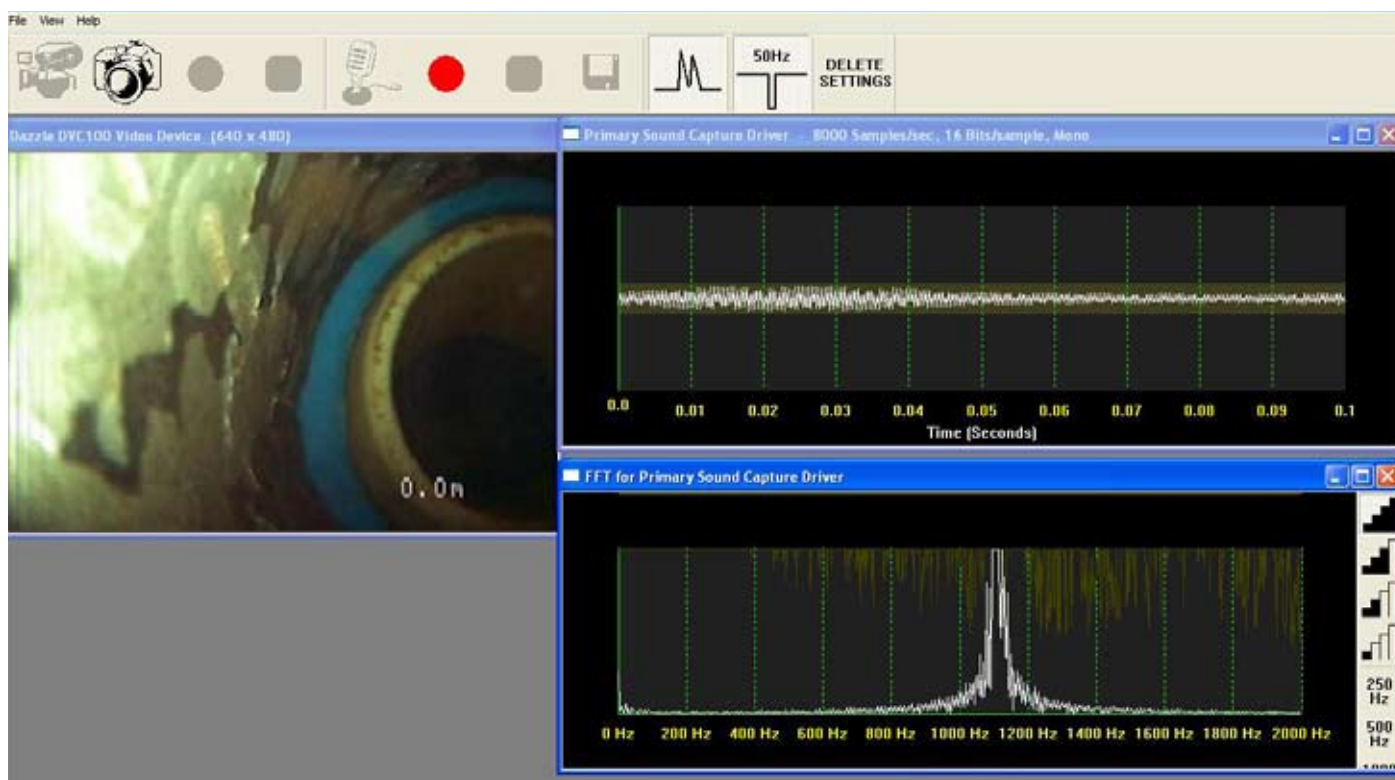
Winner of the Pipeline Industry
Guild's - Utility Pipeline
Technology Award

Specifications

- 22mm diameter multi sensor camera head
- Sensor head stainless steel with quick release connectors (pressurized capability to 16bar)
- Sensor head wide angle optic, fix focus (PAL system) with Illumination 3 Lux at F1.2
- Sensor head high powered 512Hz sonde
- Manual push/pull drive system with seal arrangement
- Cable is 30m with Nylon outer protective sheath
- Integral peli-case housing cable, notebook and control switches
- Hydrophone resonant frequency: 240 kHz (Nominal)
- Hydrophone beam pattern circumferential: omni ± 2 dB up to 100 kHz Beam Pattern Horizontal: Omni ± 4 dB up to 100 kHz
- Operating Temperature: -5 to +40°C
- 12v internal power supply
- JD7Investigator Light software with video and acoustic analysis software



***JD7 cannot guarantee access through fire hydrants due to variations in design and conditions.**



Contact

JD7 Technology Ltd
Unit 8, Masons Place Business Park
Nottingham Road, Derby
DE21 6YZ
United Kingdom
Tel: +44 (0)1332 200563
Email: info@jd7.co.uk
Website: www.jd7.co.uk

