



an **AQUAM** company



water solutions

Innovations in Water Services

0845 120 3240
www.waterservices.org.uk

the watertight service

Welcome to Aquam Water Services Ltd

The specialist arm of Aquam is dedicated to working with the U.K. water industry.

Our aim is to provide a unique support service to U.K. Water Authorities through outsourced partnership contracts and agents' agreements whilst also forging key relationships directly with water industry service partners and contractors alike.

Experience gained over many years of working alongside authorities and contractors has enabled us to evolve our offering to meet the increasingly rigorous demands and challenges faced by the water industry today. Having initially began as a bespoke supplier of regulated metered standpipes to address the challenges of water resource management and leakage reduction on behalf of Water Authorities, Aquam Water Services now extends services to numerous associated industry activities and sectors.

On a daily basis our staff throughout the U.K. will be working in fields as diverse as supplying standpipes through to dispensing water directly to shipping in ports. We also provide a sophisticated range of highly specialised industry products such as leak detection equipment, drilling & tapping tools, pipe connection & repair, fusion welders, surveying technology and pressure management systems. Complementing these ranges is our traditional offering of tool & equipment hire together with large stocks of consumables, tools, spares & fittings.



Our Nationwide delivery vehicles operating from over 25 locations together with our bespoke on-site service centres bring a co-ordinated host of services direct to your door.

For your convenience this brochure combines all of our services and products. Why not allow Water Services to become your dedicated water industry support services partner and contact us today.

0845 120 3240

contents



Page 4
Standpipe Hire &
Managed Services



Page 6
Ports and Shipping
Managed Water



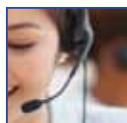
Page 8
Service Centres



Page 10
Service and Test



Page 12
Leica
ScanStation P20



Page 13
Hire Direct



Page 14
The Simple Way
to do Business



Page 15
Products Contents
Hire and Sales



Page 16
Water Leak
Detection



Page 26
Pressure
Management



Page 28
Drilling and Tapping



Page 30
Fusion Welding



Page 31
Product Lines -
Fitting & Tools

Standpipe Hire & Managed Services

Water Services has been supplying regulated metered standpipes compliant with Water Authority regulations for over 13 years.



Section 174 (3) of the Water Industry Act requires any individual or organisation wishing to use a standpipe to comply with the terms & conditions of the Water Authority that has local jurisdiction of fresh water supplies.

Flouting this law is treated as theft of water and is punishable by prosecution resulting in fines and costs that often run into several thousands of pounds. Water Authorities are becoming increasingly vigilant in this regard and prosecute illegal standpipe users on a daily basis.



As the single largest supplier of regulated metered standpipes within the U.K. today we can take the time & hassle out of sourcing the necessary standpipe and permissions from the numerous Water Authorities throughout the country.

We are the sole contracted provider for several of The U.K.'s major authorities such as Thames Water, Yorkshire Water, Southern Water etc. and process all applications directly on their behalf together with providing all necessary standpipes and associated equipment. In other areas such as United Utilities we enjoy longstanding agent's status going back over 10 years.

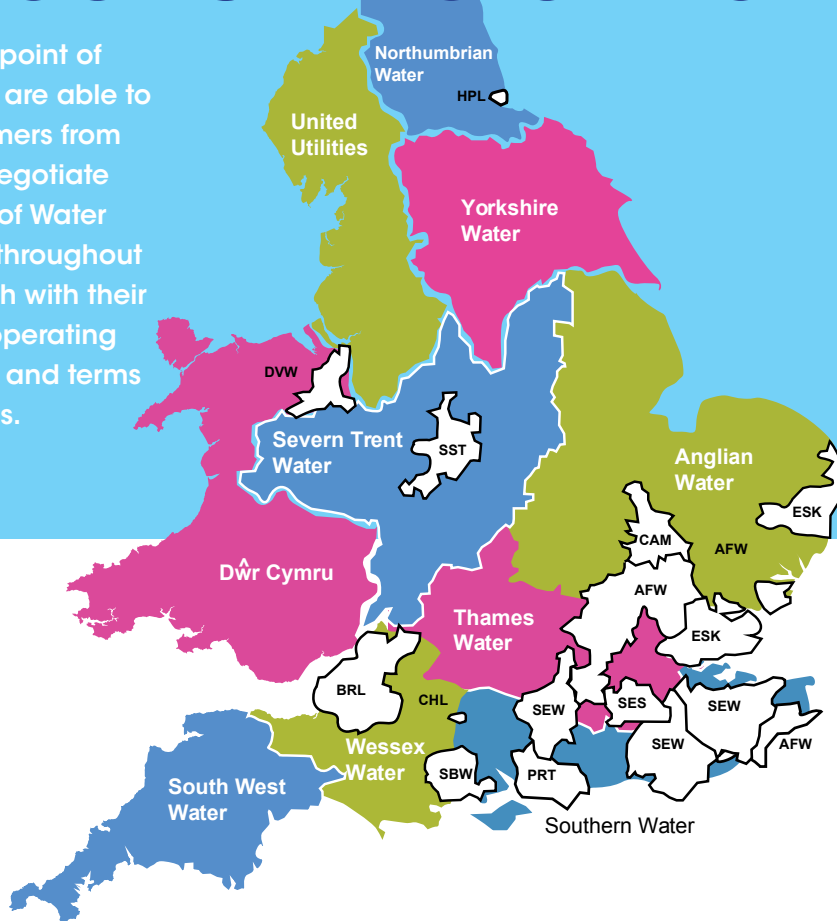
“Quite simply a single call to ourselves provides you with the correct legally compliant metered standpipe delivered directly to your door quickly and efficiently, together with the appropriate licence or permit as required allowing you to carry out your business with absolute peace of mind.”



For more information call:

0845 120 3240

As a single point of contact we are able to save customers from having to negotiate the myriad of Water Authorities throughout the U.K each with their individual operating procedures and terms & conditions.



To find our call centre which deals with your local Water Authority's area please visit our website at:

www.waterservices.org.uk

Ports and Shipping Managed Water



Aquam Water Services now offer a water dispensing service to ports and shipping.

The need for wholesome potable water for maritime vessels has long been a somewhat hit and miss affair, but following a large scale investment into the correct technologies, Water Services now offers a fully compliant dispensing service under WRAS regulations to fill vessels with potable water and ballasting water, where required.

Working initially for Port of Liverpool, Mersey Docks & Harbour Company and Liverpool Cruise Terminal, through Peel Utilities, Aquam Water Services has pioneered a unique mobile, and fully compliant method for dispensing water, from modified bowsers using air bubble separation techniques.

Our staff are long-standing experienced water operatives, drawn from the Utilities and Maritime sectors, to combine their expertise in a tailored and focussed service.



Self service dispensing points

Pre-pay smart card technology, for applications where a lower volume of water is required on a more frequent basis, such as tugs, narrow boats and general in land waterways.

Fresh water on site right when it's required - on time, every time.

Email or phone requests confirmed by email

Dedicated direct number

Friendly experience advice

Meet and greet on arrival

Measured volume dispensed and signed for

Electronic invoice emailed daily



IT systems provide essential information to client and customer:

- Live access and open book operation
- Instant electronic billing
- Detailed instant water usage reports
- Full traceability of hire contracts and invoices
- Turnover reports
- Reporting of all live contracts
- Real time status of all standpipes
- Ongoing system & software development
- Bespoke printed stationery

Sample of Benefits to our Clients

- Onsite tailored solution
- Commercial revenue streams to you
- Detailed & real time reporting
- High standards of service and hygiene
- All livery in your logo and ID
- Speed of response and key account management
- Logistical and environmental enhancements
- One call direct number
- All administration eradicated
- Audit trails and historical records
- Health and safety support
- Pressure network support



Service Centres

What are On-site Service Centres?

Flexible, modular units delivered directly to your site with minimal cost, time and disturbance. Built using advanced structural insulated panel techniques for a wide range of commercial applications, from Retail Units, Training Centres, Service Centres and Workshops.



How can these centres save your business time and money?

Our fully stocked service centres offer the following solutions:

- Bespokely built to suit your requirements and budget
- Include rapid response vehicles to ensure minimal down-time
- Fully stocked store with products at reduced hire rates
- No transport costs for standard equipment
- Reduced carbon footprint through efficient logistics management
- Equipment only charged for when used
- No product restrictions – size or weight
- On site servicing and repair of current stock, hire and own assets
- Training facilities covering a number of key topics
- Health and Safety support
- Asset management stock control reducing your spend (weekly reports available)

Trading Partners

Our unique partnering venture with Wolseley enables us to offer a fully integrated supply chain solution located at your key facility. This joint venture has enhanced the range of goods and services we offer, stocked directly on-site or within the vicinity of your project. The company is organised into trading brands, many of which are market leaders with outstanding reputations for supplying professionals in the construction and service markets. Our aim is to work closely with your budgets and sub contractor costs with an open book policy option and personal onsite QS assistance for re-spec and design.



The range of services and products we can offer includes, but is not limited to the following:

Services

- Tool, plant / access hire
- Asset management
- Cooling & drying
- Lifting equipment and on-site testing & certification
- PAT testing, service, calibration and certificates
- H&S initiatives and safety training
- PPE, consumables and welfare
- Waste management services
- Flood management

Supplies

- Specific spares or bespoke products
- Plumbing & drainage supplies
- Timber, bricks, blocks
- Roofing materials
- Ironmongery
- Lighting
- M&E and electrical supplies

Essentials

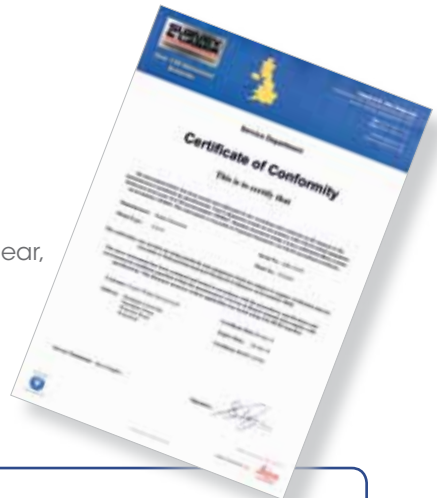
- Clothing, shoe fitting
- General items: e.g. mugs, tea, coffee
- Diamond products, drill bits
- Cutting blades

Service and Test



Quality service & support right when you need it on site.

Survey & Laser are part of the Supply UK group. Supporting a large range of Civils, Utilities and construction/surveying instruments and safety equipment. Our Technicians are manufacturer-trained to service / repair Leica, Topcon, Sokkia, Nikon, AMA Laser, Triax, Pentax, QBL, MSA, Ridgegear, Crowcon and Draeger to name just a few.



BSI ISO 9001:2008



Our quality service enables standardisation across not only your business but also subcontractors, all conforming to a common Health & Safety and quality standard in one location.



“ If you are accurately locating underground services or actively work within confined space or hazardous underground environments we are guaranteed to have the equipment needed to ensure the safety of both your work and workforce. ”

Experts in **Survey** Leaders in **Service**



Survey & Laser is a leading provider of specialist surveying instruments and an authorised Leica Geosystems distributor.



Industry's Best Performing Ultra-High Speed Scanner

Leica ScanStation P20 - 3D Scanning

Unprecedented performance in ultra-high speed laser scanning

Productivity & Accuracy

An innovative combination of advanced time-of-flight range measurement plus modern Waveform Digitising (WFD) technology enables the compact Leica ScanStation P20 to achieve ultra-high scan speeds and low-noise performance at extended range (to 120 m). Together with high-accuracy angular measurements and survey-grade tilt compensation, Leica ScanStation P20 delivers unprecedented ultra-high speed scan data quality for as-built and scene surveys.

Scan up to 1 million points per second

Leica ScanStation P20 is the ideal instrument when very short time windows are available for capturing High-Definition Survey™ data or when ultra-high density, full dome scan data is needed for client deliverables.

Unmatched environmental capabilities

Developed and manufactured by Leica Geosystems, Leica ScanStation P20 lets users apply ultra-high speed scanning in operating temperatures ranging from -20° C to +50° C. Moreover, with an Ingress Protection rating of IP54 and an eye-safe laser rating, users can reap the benefits of ultra-high speed scanning for even more sites and projects.

"Check & Adjust" for added confidence

Leica ScanStation P20 is the first laser scanner to feature a valuable "Check & Adjust" capability. Instead of sending the instrument to a service centre, users can electronically check the accuracy of their ScanStation P20 themselves and automatically adjust instrument parameters to ensure the highest level of performance.

Supply UK

Hire Direct

Barriers & Fencing

Cutting & Sawing

Power Generation

Lifting & Handling

Compaction

Breakers

Concreting

Operating a comprehensive
hire fleet of equipment



**One call....
does it all**
0870 6000 998

The Simple Way to do Business

Call:

0845 120 3240

www.waterservices.org.uk

Plant, Purchase, Reporting & Cost Control

At Water Services we have invested a great deal of resources in the quality of management information we are able to provide our customers. Recognising that keeping control of hired tools and equipment and detailed purchase reports can drastically reduce both costs and disputes, the development of "real time" live reporting was considered critical.

On - Line Services

Our latest customer service offers 24 hour convenience, 7 days per week through on-line secure access to our database. Once you have been set up with a secure user access code and password you will be able to utilise a whole host of on-line features from running your own live purchasing reports, to printing off your own copy invoices, statements and finding documents.

Invoicing to your Terms

At Water Services we adopt the same attitude towards invoicing as we do to other areas of our business - [flexibility](#).

Recognising that our customers differ enormously between financial years' and accounting practices generally, we look to make our invoicing flexible. We offer a choice in the way you are invoiced. Essentially it is up to you the customer to decide how many invoices you receive and how and when you receive them!

Product Contents **hire and sales**

Water Detection	Page
Noise Reduction Water Leak Detector DNR-18	16
High performance acoustic Water Leak Detector HG-10	17
Light Weight Water Leak Detector LD-7	18
Fuji Digital Sound Detector FSB-8D	19
Fuji Leak Noise Correlator LC-2500	20
Bottled Water Service	21
Data Logging i600 / i650	22
Mala Ground Penetrating Radar: 239/02	23
Drain and Sewer Camera System	23
HERMETICA S-500 / 100 / 2000 Series	24

Pressure Management
Telemetry Systems

Drilling & Tapping
No. 1 Drilling & Tapping Machine
PQR 4000
PQR 6000
PQR 8000
Flow Stop
Universal
GasMaster

Fusion Welding
Electrofusion Boxes

Product Lines - Fitting & Tools
Layflat Hose
Box Cleaner
Standpipe
Valve Key And Bar
Stop tap Key
Lifting Key
Hog Pump
Bib Tap
Stethoscope
Listening Stick Wooden Head
Hydrant Blanking Cap
Blanking Plug
Chrome Sampling Tap
Hose Coupling
Hydrant Extension Spindle
Hydrant Extension Tube
Hydrant Extension Spindle
Hydrant Valve False Top
Brass Check Non Return Valve
Single Compression Check Non Return Valve
Double and Single Non Return Valves
Watts Cast Iron Backflow Prevention Valve

Aquam Water Services are fully aware of the time restraints in which companies have to detect, locate and repair water leakages. We have carefully researched available technology and found the Fuji Tecom range to be superior in the field of leak detection. Fuji has been in the industry of leak detection equipment for over 50 years and has gained a worldwide reputation as being one of the best.

Noise Reduction Water Leak Detector DNR-18

The advanced digital CPU eliminates intermittent interfering noises, like passing vehicles, people talking, and pedestrian footsteps.

Traditional band-pass filters filter continuous noises, such as A/C hum, idling motors, and wind. While traditional filters are very useful, they are not able to filter out the common, intermittent noises with broad frequency ranges. DNR-18 has optional accessories for water leak "pinpointing" and water leak "surveying".

Graph the leak sound levels at 5-10 spots directly over the pipe. Let the DNR-18's amplifier pinpoint the leak's location for you instead of relying upon your hearing.



This is the High Performance acoustic leak detector.
It has been 10 years since the HG-10 went on sale and this has built a solid reputation due to useful hand-switch and light weight sensor.
It allows accurate pinpointing of the actual leak.

High performance acoustic Water Leak Detector HG-10

FEATURES

Optional 3 contact rod for water leak surveying.

Ground microphone (pick-up) equipped with the characteristic ball to break wind noise, has high sensitivity. (U.S.A. Patent 5, 959, 210)

Lightweight handset of only 500g including the pick-up. Minimizes fatigue during the leak detection work continued for many hours.

Large meter deflects sensitively and indicates clearly the intensity of leak sound.

Ergonomic keys and knob arranged on the panel have been designed for the work by one-handed operation.

Solidstate component without leads is designed to minimise malfunction during long-term use.



The LD-7 is the smallest and lightest-weight water leak detector yet it has a very sensitive ground sensor. With the listening rod connected to the ground sensor, listen to the sounds of water-leaks transmitted to taps, meters and valves. Whether your needs are for water leak surveys or for water leak pinpointing in service lines or in buildings, the LD-7 offers excellent performance at a very reasonable price.

Light Weight Water Leak Detector LD-7

FEATURES

Compact amplifier (with mute switch) fits inside the palm of the user's hand. Press the mute switch (on/off) to activate the leak sounds in the headphones, and then release the mute switch when moving the sensor (protects your hearing!).

Designed for all of the water leak detection applications, including leak surveys and leak pinpointing. Use the 3-point ground plate for pinpointing on streets and concrete slabs. Use the optional magnet base or the contact rod for leak surveys at hydrants, valves, or meters.

Extremely compact and lightweight. The entire LD-7 inside its aluminium carrying case measures only 380 x 160 x 110mm, small enough to be stored behind the seat inside the cab of the truck.



The FSB-8D is a small, compact electronic sound detector for finding water leaks. FSB-8D especially, is well-suited to Water Leak Surveying on plastic pipes like PVC and PE.

Fuji Digital Sound Detector FSB-8D

FEATURES

Notch Filter

- Avoids specific frequencies.
- Reduces alternating current such as vending machine noise, pole-mounted power transformer noise and induced hum noise.

Short contact rod with antislip finish

- Can help you to listen to leak sound with stable contact.

Improvement in intensity and sensitivity

- Intensity: twice (2) in comparison with former model FSB-7D.
- Sensitivity: three (3) times in comparison with former model FSB-7D.

Protection against overcurrent

- Battery terminal has the unique structure that batteries do not contact the terminal in case they are put in the case reversely.
- Auto-regression fuse.



Correlators: Detection Made Easy!!

Leaks in pipelines valuably produce noise. This noise travels by two routes. Some travels through the ground to the surface and some is transmitted in the wall of the pipe and the water. Correlator detects noise transmitted in the wall of the pipe and the water. "Pipe fittings" such as meters, valves and hydrants are used as access points. The position of leaks can be pinpointed by picking up leak noise at these two points.

Fuji Leak Noise Correlator LC-2500

FEATURES

The main processor unit, 24 bits digital signal processor for much faster correlations.

Weighing less than 3.1Kg. Can easily be carried all day - ruggedly built and weather-tight

The main processor unit and the pre-amps/transmitters can operate in rain storms, sub-zero temps., and direct sun for hours.

High sensitivity sensors standard for pvc pipes, "poly" services, and large mains.

The new lc-2500 sensors are very sensitive, small in diameter, and totally submersible.

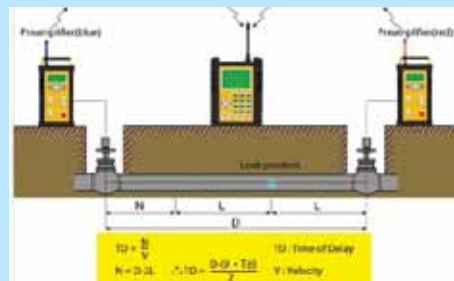
No built-in rechargeables. Runs all day on standard or rechargeable "d" batteries.

Easy to set up and run. Input pipe materials, diameters, and length by simply selecting them in the program menus. The automatic function can do the rest.

Powerful transmitter radios with 500mwatts output to send signals 900m that go over hills and around buildings. Optional "hydrophones sensor" for larger trunk mains or pvc pipelines.

How does a Correlator Work?

1. Sensors hear the leak sounds transmitted on the pipe walls.
2. Pre-amplifiers/transmitters amplify leak sounds and transmit them continuously to main processor (cpu).
3. Main processor (cpu) compares (correlates) sound and displays correlation results.
4. User inputs pipe material, pipe diameter, and pipe length for all segments.
5. Main processor/cpu calculates exact distance to leak.



Drawing from our success and experience of supplying fresh potable water to the docks and shipping industry for many years, we at Aquam Water Services are proud to offer our Tank and Bottled Water Service to a much wider customer base:

Tank and Bottled Water Service.

We can provide daily regular deliveries

Strategically stored tank and bottled water ready to be deployed at a moments notice to ensure no disruption to the end user.



Cable Locators

Cable locators with data logging.

Locators record and store information every second. Integrate seamlessly with mobile mapping technology to log survey data, in addition to enabling wireless Bluetooth data transfer.

Data Logging i600 / i650

FEATURES

Stored in the locators memory

Retrieved & transferred via Bluetooth to a PC for analysis

Stores approximately 80 hours of records

Bluetooth connectivity

LOGiCAT software

View the locators use:
Search by date
or View all data

CODE	PRODUCT
203/01	Cable Locator (Standard)
203/03	Cable Locator (Depth)
203/02	Cable Locator (Data Logging)
203/04	Cable Locator (Data Logging & Depth)
217/01	Signal Generator
246/01	Seek Tech Transmitter (SR20)
246/02	Seek Tech Inductive Clamp (SR20)
246/03	Seek Tech SR20 Cable & Pipe Locator
233/01	Metal Detector
217/03	Sonde
205/01	Cobra Reel 100M (small)
205/02	Cobra Reel 150M (medium)
205/03	Cobra Reel 200M (large)
217/04	Flexitrace 50M



Detection Equipment

Drain and sewer camera system.

Mala Ground Penetrating Radar: 239/02

FEATURES

Quick and easy set up

Simple and intuitive menus

Grey or two different colour radargram screens

3 soil types / 3 depths

Horizontal distance meter

Ideal for locating underground pipes and chambers etc



Drain and Sewer Camera System

FEATURES

Live inspection colour screen

Simple operation with intuitive menu interface

Recording at the touch of a button integrated MP4 recorder

60 GB hard disc drive Windows-style. Data management

Integrated locating Sond 33 kHz, 512 Hz, 640 Hz (compatible with all standard locators)

Distance counter

Watertight keyboard

239/01 Rough Terrain Kit



245/01 Colour Drain Camera System



NEW to the UK

**Unique offering
from Water
Services**



Pipe Connection & Repair

Solutions for connecting and repairing pipes. Use on varied applications and dimensions.
Unique design of gasket allows hydraulics of water pressure to assist in sealing process.

HERMETICA S-500 / 100 / 2000 Series

FEATURES

For all kinds of pipe material

One or two closures

Available in two widths:
135mm or 200mm

Available in two qualities:
AISI 304 or AISI 316

Diameters: from 60mm to 3000mm
(Standard 88mm-1370mm)

Pressures: from 0 to 40 bar,
depending on the diameter
(Standard NP 10)



Call for more information
0845 120 3240

www.waterservices.org.uk



Telemetry Systems

Water Services has joined forces with Brazil's Vector Technology Group to distribute its telemetry-based water services products and software into the UK and Europe. The joint venture has led to the creation of a new company called Vectora Europe.

Water Services will manufacture and distribute VTG products across Europe respectively, with direction from VTG's headquarters in Sao Paulo.

We design and manufacture:

- Instrumentation
- Sensors
- Software with integrated M2M, telemetry and remote control capabilities for utilities, oil & gas and OEM markets
- Accurate web based water billing systems and products

Our Software

- Remote monitoring, control & configuration
- Web-based server or client's Based server remote access from any device
- Full asset management system for all your assets, viewable on web maps
- Internet or SMS alarms
- Live history, reports and statistics instantly



The **Future** of **Instrumentation** through
Innovative Products and **Tailored Solutions**

wwMeter



Accurate data and waste water billing domestic or commercial.

ePRESSURE



Epressure, pressure sensor, flow, data logger, level recording, temperature, alarm sensors.

AutoBox System



Autobox, Complete telemetry & remote control, on/off, pressure reducing, level, flows, data logger. A control unit in one simple box.

Water Services have the most extensive range of underpressure drilling equipment to meet all the requirements for any type of drilling or hot tapping and will suit all pipe materials and connections.



No. 1 Drilling & Tapping Machine

FEATURES

Talbot no1. 1/2" - 1" Lightweight, hand operated water drilling and tapping machine

Taps 1/2", 3/4" and 1" bsp connections into dry or pressurised metallic mains or via tapping straps into AC, PVC/PE or steel mains

Inserts ferrules & quadrina nipples underpressure

For mains pressure up to 20bar. Can be supplied with ferrules and ferrule straps



PQR 4000

FEATURES

A longer travel machine for drilling 1/2"-2" through ferrules and saddle straps in PE, PVC and AC

Available with kits for either plug or screw down ferrules to drill 1/2"-1" or 1/4" - 2" ferrules on AC, PE and PVC pipe



PQR 6000

FEATURES

Versatile, lightweight and robust, the PQR6000 is capable of drilling steel, cast, ductile, PE, PVC and AC

Unique design enables constant cutting torque and coupon retention

Pneumatic or hand operation



PQR 8000

FEATURES

Hydraulically operated, the PQR8000 is designed for drilling 4"-12" holes in metal pipe

Utilises super high-speed cutters to reduce drilling times

Far lighter than comparable machines, but equally as robust, gives versatility and adaptability Models available / 100cm travel

Flowstop

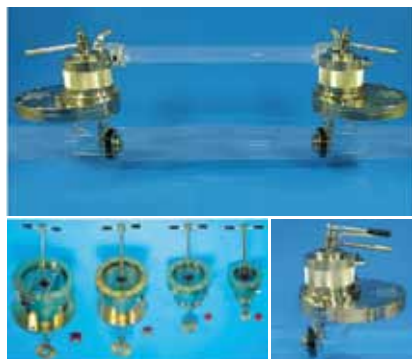
FEATURES

Low cost, lightweight Flowstop system c/w hydraulic stoppers

Enables clients to purchase their own or hire Flowstop equipment at a fraction of the cost of competitor's equivalents

Operates on mains sizes 2" through to 48" and pressures from 12 bar up to 24bar

The design incorporates a full by-pass facility or temporary by-pass allowing continued use of the pipeline whilst undergoing repair, no interruption to supply



Universal

FEATURES

Single spindle drilling and tapping machine for use on water mains, with built-in valve gate to enable insertion and removal of ferrules

Capable of drilling higher pressure mains (20bar rated). Only ten Saddles necessary for 2"-72" pipe

Adaptors are available for the removal of ferrules under pressure



GasMaster

FEATURES

Makes 1/2"-2" service connections at pressures up to 2 Bar

Standard Machine supplied with all accessories for drilling and tapping connections of 3/4" and 1" equal top entry service tees, and 1 1/4", 1 1/2" and 2" nipples

Extended Bridle version available for Powerdrive applications, c/w Torque Arm

Aluminium castings with bronze bushes make the kit lightweight but robust

Supplied in a strong metal box complete with saddles 3" through to 12"



The MAXIFUSE™ Proxima series of multimodal electrofusion processors. These boxes can cater for a wide variety of fittings and can fuse most electrofusion fittings. Choose from manual, automatic (for use with embedded resistor fittings), and bar code reading options. Fusion event locations can also be recorded through GPS.

Electrofusion Boxes

FEATURES

The electrofusion process calls for a cooling time at the end of each successful weld. Currently this is not recorded as part of the process. For this cooling cycle to be recorded in the memory it is necessary to keep the box connected to the power supply, in most cases this is a generator which must of course remain running using up fuel and emitting CO2.

Unique in the case of EF Controllers, we are about to fit a sustainability circuit which allows

the display and memory to remain running by the control boxes reverting to an internal battery back up thereby allowing the generator to be switched off and if necessary disconnected, saving fuel and reducing CO2 emissions.

The cooling time will be recorded until the recommended time expires or the fitting connector plugs are disconnected. The Proxima range of control boxes will be renamed Sirius Sustainability to distinguish this new feature.



For further
details contact
0845 120 3240

The following pages show a selection of the products we offer.
For the full list of components, please visit the website

www.waterservices.org.uk

Hoses & Couplings
(comprehensive
range available)

Aluminium Standpipe
with 2 1/2" Aluminium
Check Valve

Lid Lifters
& Keys
(complete range)

Hydrant
Keys & Bars
(complete range)

Contractors Standpipe
with Check Valves

Hydrant Extension
Piece (varying lengths)

Valve Extension
Spindle
(varying sizes)

Sounding Keys
& Stop Taps

False Tops & Caps
(complete range)

Hydrant
False Cap

Fire Hydrant
(to BS 750)

Cast Wheels
(full range available)

Pressure
Reducing Valve

Air Valve

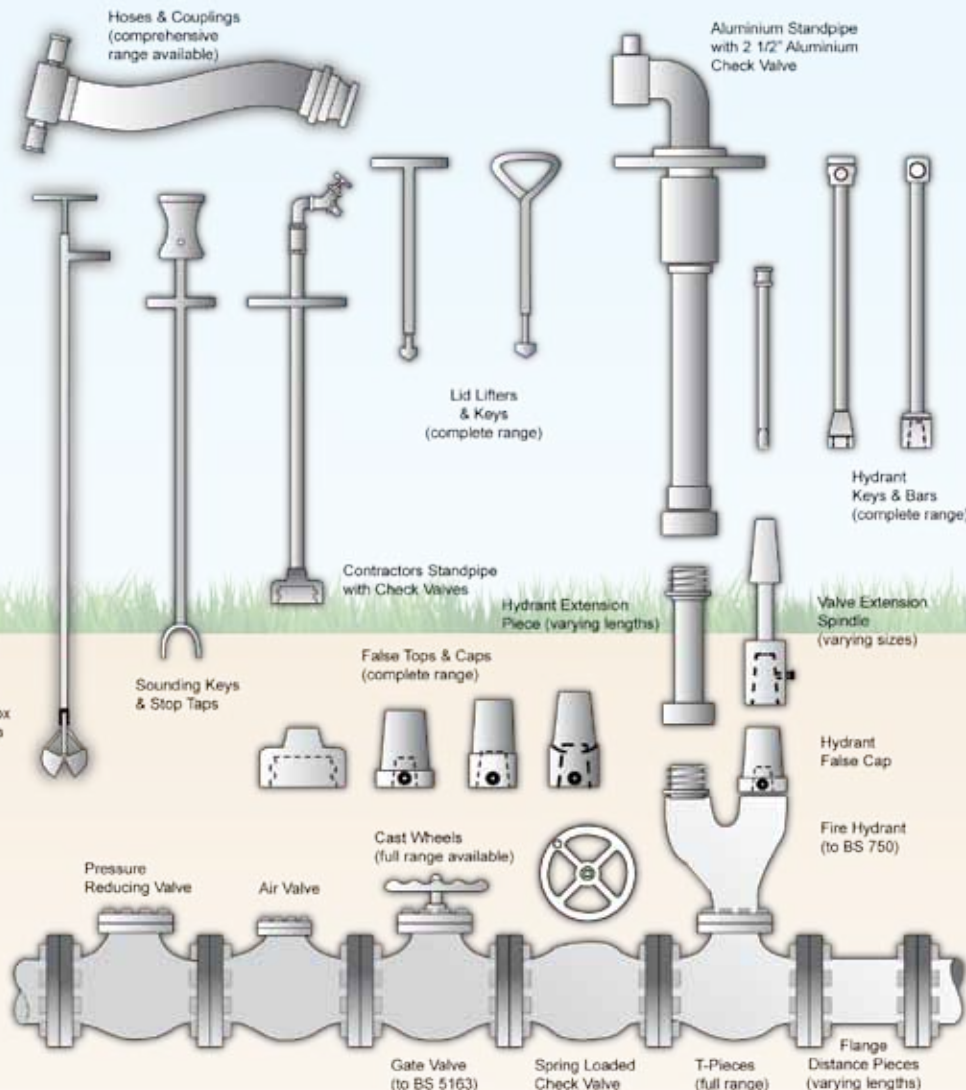
Gate Valve
(to BS 5163)

Spring Loaded
Check Valve

T-Pieces
(full range)

Flange
Distance Pieces
(varying lengths)

Valve Box
Cleaners



White Ribblelite
Layflat Hose



Aquaman Blue
Layflat Hose



Red Brigsdier
Layflat Hose



AQ 17-3

2 inch Valve
Box Cleaner



AQ 17-2

3 1/2" Valve Box Cleaner
1.5 Metre Long



AQ 17-5

5" Valve Box Cleaner
1.5 Metre Long



AQ 17-1

3 1/2"
Valve Box
Cleaner
1 Metre
Long



AQ 8-4

1 inch
Standpipe



AQ 8-8

2 1/2"
Aluminium
Standpipe



AQ 8-40

1" Standpipe
Double
Outlet



AQ 8-51

2 1/2"
Aluminium
Double
Headed
Standpipe
with
2" Double
Checkvalve



AQ 8-27

2 1/2"
Aluminium
Standpipe
with
2" Double
Checkvalve



AQ 8-10

2 1/2"
Aluminium
Standpipe
with
2 1/2"
Double
Checkvalve



AQ 8-2

3/4"
Standpipe



AQ 9-1

Aluminium Valve
Key And Bar



AQ 10-8

Steel Valve Key
And Bar



AQ 3-1

Stop Tap Key



AQ 3-3

Four Prong Stop Tap
(wheel) Key



AQ 3-2

Broken Stop Tap
Key Spindle Grip



AQ 3-4

Broken Stop Tap Key
Spring Grip Key

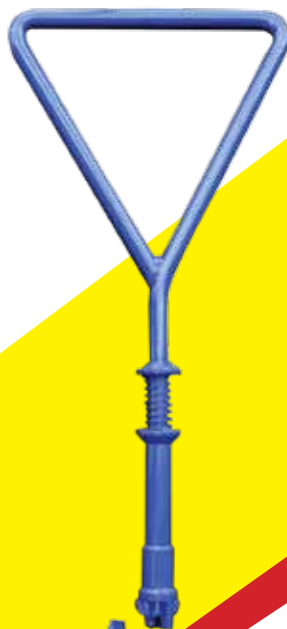
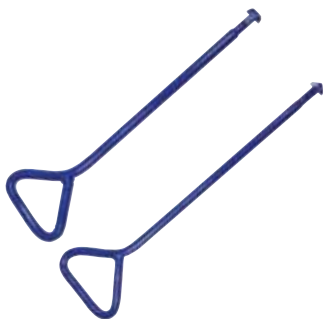


AQ 6-3

Standard Heavy Duty
Lifting Key

AQ 6-4

Extra Heavy Duty
Lifting Key



NEW for 2013
Safety Lifting Key

Lifting made safer



HO 6-2

Hog Pump
4ft Black

HO 6-1

Hog Pump
3ft Black



AQ 24-2

3/4" Hose Union
Bib Tap



STETH -1

8" Pocket Stethoscope



AQ 15-3-4

4ft Listening Stick
Wooden Head



AQ 15-2

4ft Combi Listening Stick
Wooden Head and
Stoptap Key



AQ 19-1

Hydrant Blanking
Cap



AQ 42-17

2 1/2" Instantaneous
Blanking Plug



AQ 34-7

Chrome Sampling
Tap



2 1/2" Male
Hose Coupling



AQ 14-6

Steel Valve and Hydrant
Extension Spindle
(150MM) 6"



AQ 9-4-9

9" Hydrant Extension
Tube

AQ 9-4-12

12" Hydrant Extension
Tube (300mm)



AQ 14-9

9" Steel Valve and
Hydrant Extension Spindle





Hydrant Valve False Top

AQ 20-1	3/4 (19mm)
AQ 22-2	1 1/4"
AQ 20-3	7/8"
AQ 20-2	13/16"
AQ 21-1	1"
AQ 22-1	1 1/8"

Brass Check Non
Return Valve



Single Checkvalve

1/2" 3/4" 1"
1 1/4" 1 1/2"
2"

Double Checkvalve

1/2" 3/4" 1"
1 1/4" 1 1/2"
2"

Single and Double in BSP and Compression
Check Non Return Valve



Single Checkvalve

15mm 22mm
28mm

Replacement brass olive X 10

Double Checkvalve

15mm 22mm
28mm

WRAS Approved

Double and Single Non Return Valves



Double Check Valve				
Size	Bore mm	Length mm	dia mm	Weight Kgs
DN 50	50	205	165	17
DN 65	65	245	185	18.5
DN 80	80	265	200	20
DN 100	100	315	220	30
DN 125	125	405	250	40
DN 150	150	465	285	60
DN 200	200	565	340	100
DN 250	250	693	405	188
DN 300	300	775	460	280
DN 350	350	925	520	450

Single Check Valve				
Size	Bore mm	Length mm	dia mm	Weight Kgs
DN 50	50	100	165	8.5
DN 65	65	120	185	9.25
DN 80	80	130	200	10
DN 100	100	155	220	15
DN 125	125	200	250	20
DN 150	150	230	285	30
DN 200	200	280	340	50
DN 250	250	344	405	94
DN 300	300	385	460	140
DN 350	350	460	520	225

Foot Valve				
Size	Bore mm	Length mm	dia mm	Weight Kgs
DN 50	50	210	190	8.5
DN 80	80	227	200	10
DN 100	100	271	220	15
DN 150	150	402	285	30
DN 200	200	490	340	50
DN 250	250	602	405	94
DN 300	300	674	460	140
DN 350	350	805	520	225

Watts Cast Iron Backflow
Prevention Valve



Description

metric -

single checkvalve

65mm
80mm
100mm
150mm



an **AQUAM** company



Tel : 0845 120 3240

Email : info@waterservices.org.uk

www.waterservices.org.uk