



an AQUAM company

# HERMETICA SF Couplings

THE SOLUTION FOR  
CONNECTING AND  
REPAIRING PIPES





## Varied applications:

- For all kinds of pipe material
- One or two closures
- Available in two widths: 135mm or 200mm
- Available in two qualities: AISI 304 or AISI 316
- Diameters: from 60mm to 3000mm (Standard 88mm-1370mm)
- Pressures: from 0 to 40 bar, depending on the diameter (Standard NP 10)

S-500 Series



100 Series



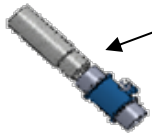
2000 Series





an AQUAM company

## Varied applications:



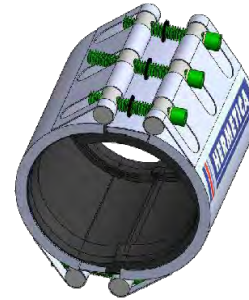
Butterfly valve







Varied applications:



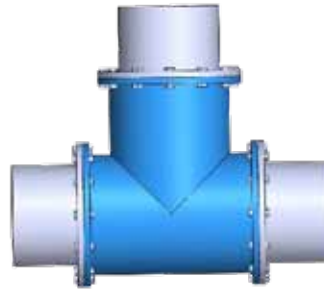
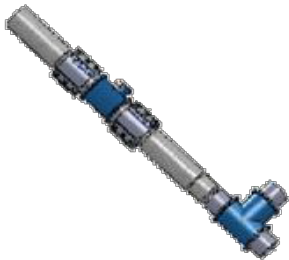
HERMETICA Coupling





an AQUAM company

## Varied applications:

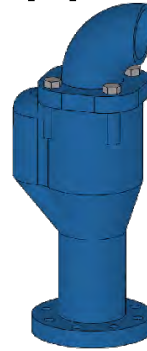


Branch-off

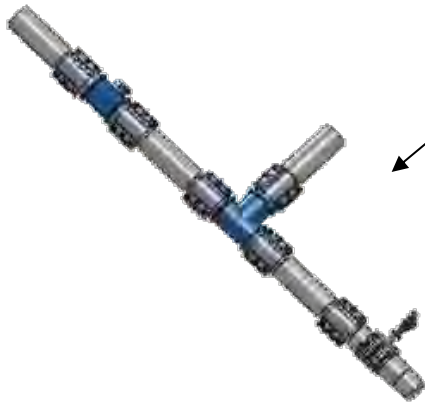




Varied applications:



Vent valve



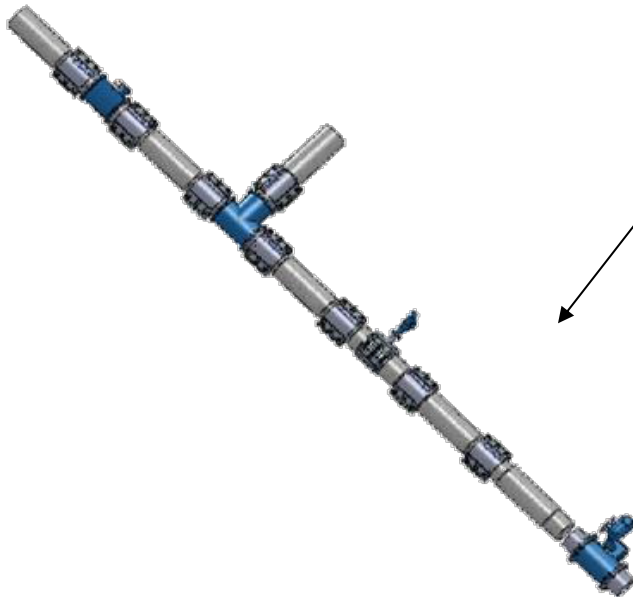


an AQUAM company

## Varied applications:

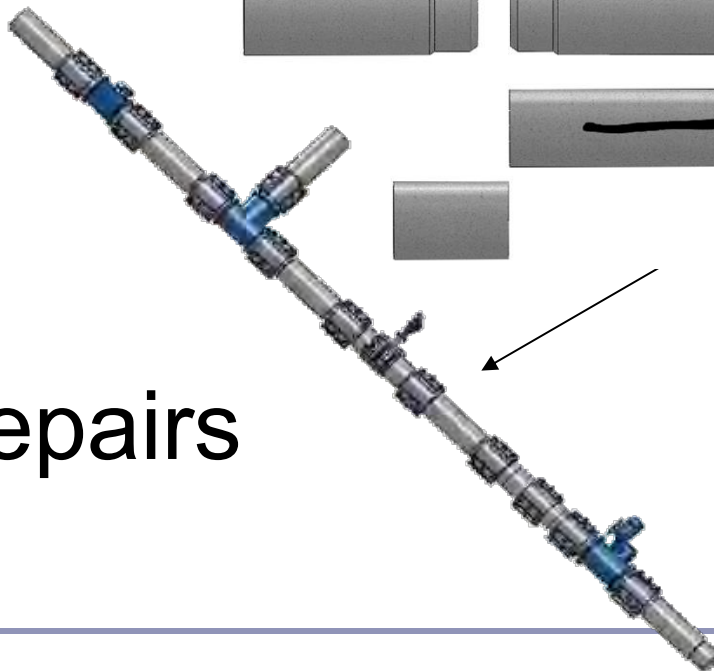
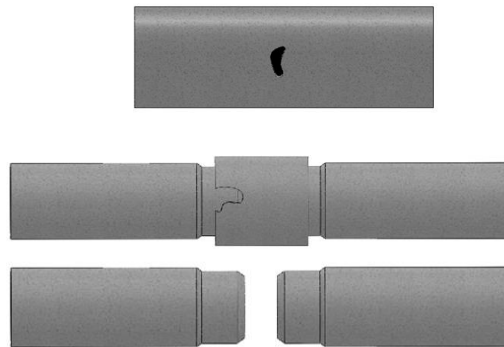


Gate valve





# HERMETICA SF



Repairs





## ***Metal components:***

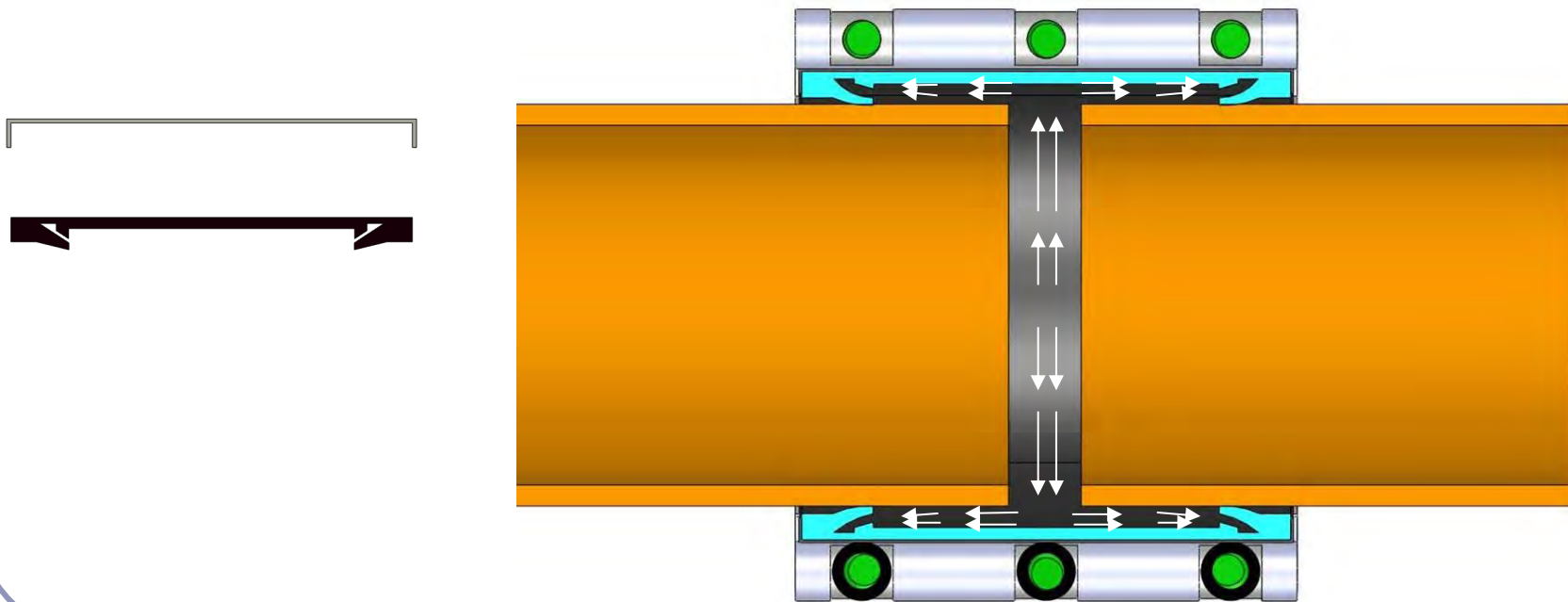


- Casing, screws and bolts made of stainless steel
- Screws with Teflon coating, lubricant and brass washers
- O-rings



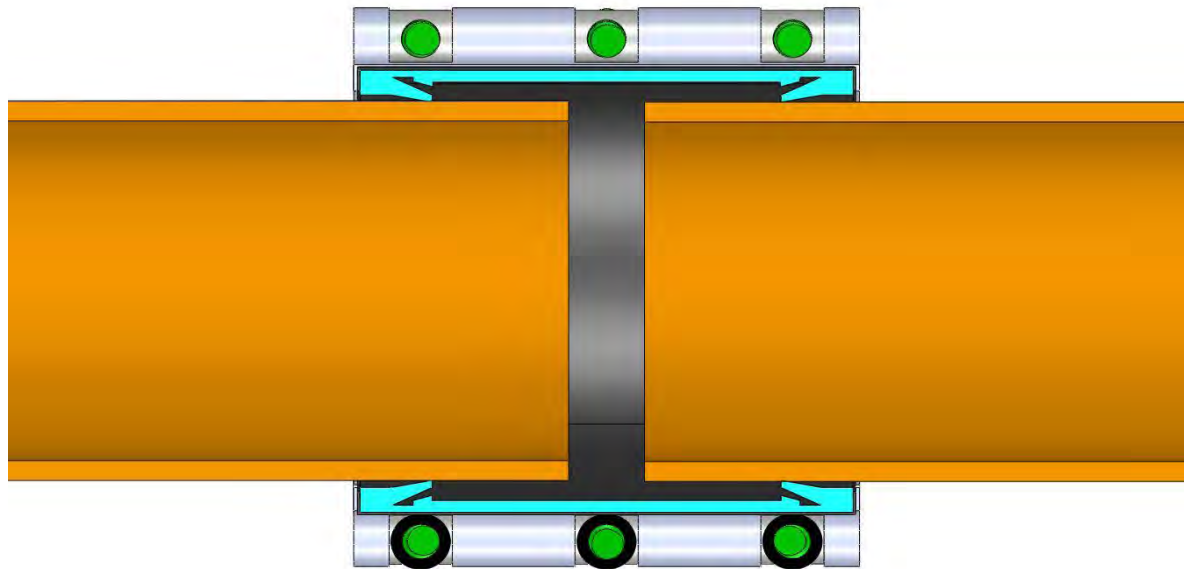
Components:

Bi-labial rubber gasket made of EPDM



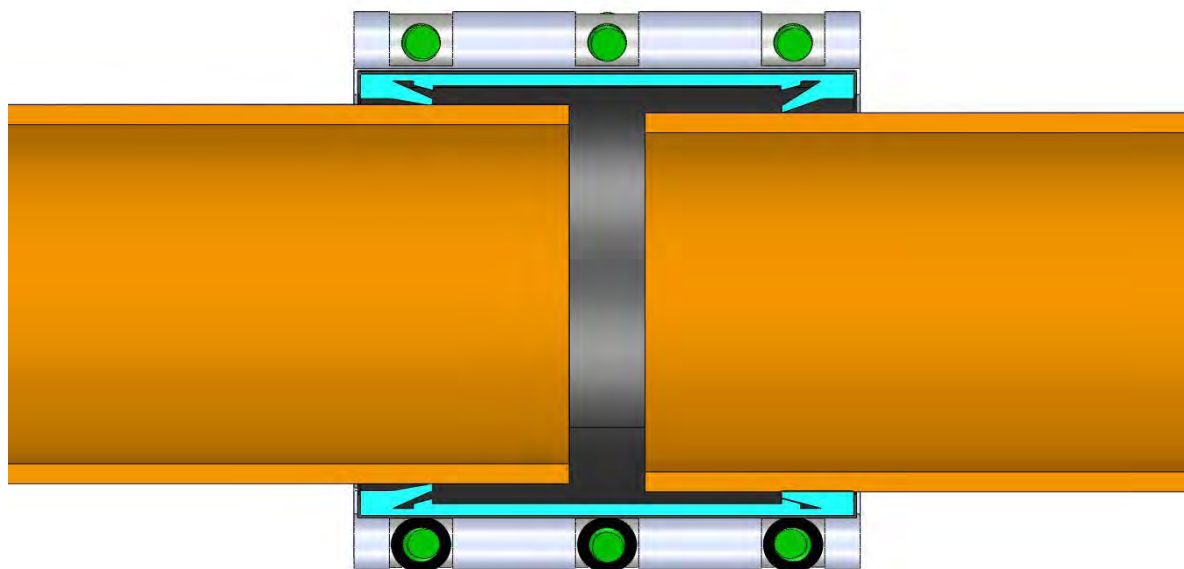


Actuation with vibrations:



# **HERMETICA SF**

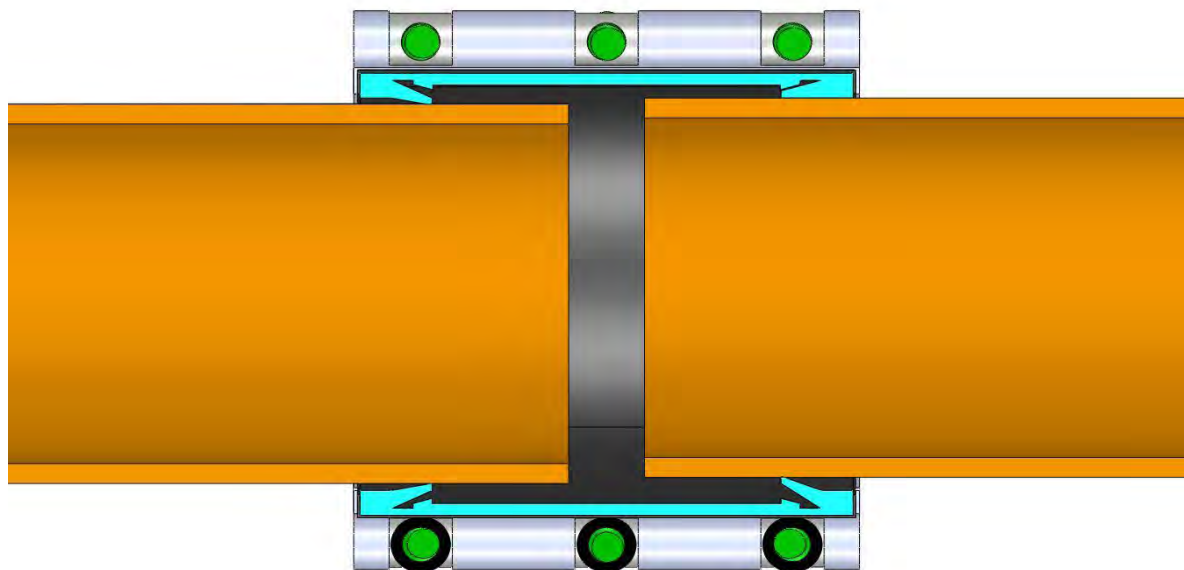
---





# **HERMETICA SF**

---





## The coupling for pipe connection and repair:

- For all kinds of pipe material
- One or two closures
- Available in two widths: 135mm or 200mm
- Available in two qualities: AISI 304 or AISI 316
- Diameters: from 60mm to 3000mm (standard 88mm -1370mm)
- Pressures: from 0 to 40 bar, depending on the diameter (Standard NP 10)
- Other pressures and diameters upon request
- Produced under ISO 9001 y ISO 14001

If you have any doubts or questions on the different applications, pressures or diameters, please do not hesitate to contact us:



Kingsley Hall, 20 Bailey Lane, Manchester Airport  
Manchester M90 4AN  
Tel: 0845 120 3240



an AQUAM company